
Daikin Online Controller

We would like to announce the sales launch of the new Daikin Online Controller for Daikin split units other than Emura II

Always in control no matter where you are



The option BRP069A42 in combination with Daikin split indoors will provide you the following features:

- Monitoring the indoor unit status
- Control of the operation
- Scheduling

These operations are possible from your smartphone or tablet with the free app available for Android or Apple devices.

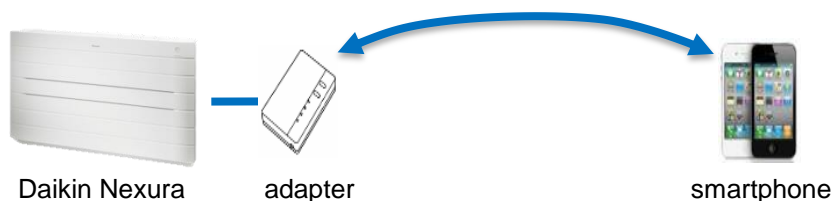
The **WPS feature** allows for an easy connection to your home network.



1. Communication methods

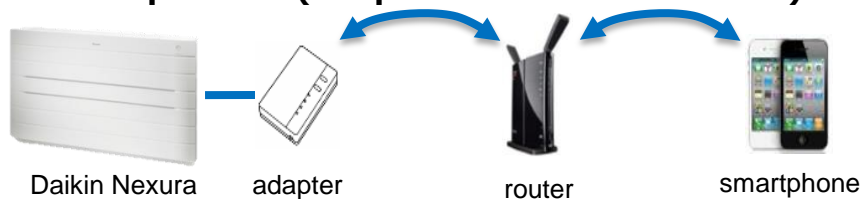
The Daikin Online Controller application can control and monitor the status of **up to 50 Split indoor units**.

There is 3 control possibilities:

1. In-home operation (Adapter mode* = AP-mode):

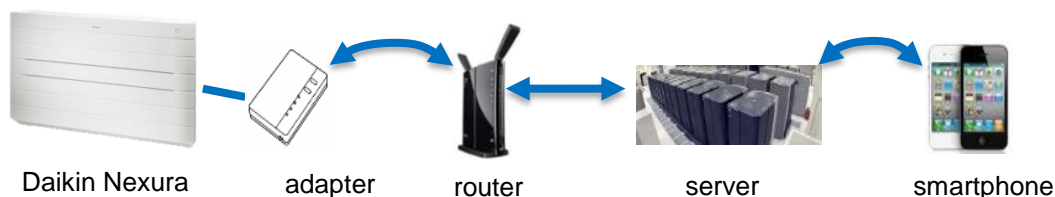
The smartphone directly connects to the BRP069A42 wireless adapter to control the split indoor unit. This connection is made possible thanks to wireless network generated by the adaptor itself (name and password are mentioned on the sticker of the adapter casing).

In this control scheme, it is possible to connect to 1 adapter at a time.

2. In-home operation (Adapter mode* = RUN-mode):

The smartphone and adaptor will be both connected to the local wireless network and communicate through it.

In this control scheme, multiple adaptor can be connected to at the same time

3. Out-of-home operation (Adapter mode* = RUN-mode):

In this control situation, the smartphone application and the adaptor communicate through the server.

To reach the server, the wireless adaptor uses the local network to connect to internet (a login ID and password can be generated from the Daikin Online Controller application settings). From the other side, the smartphone application is communicating to the server through an available data network (e.g. 3G/4G or a wireless network with internet connection)

This control scheme enables the connection of multiple adapters at once, from any location with mobile internet connectivity.

(*): The adapter mode can be switched by pressing the "Mode" button for 2 seconds.

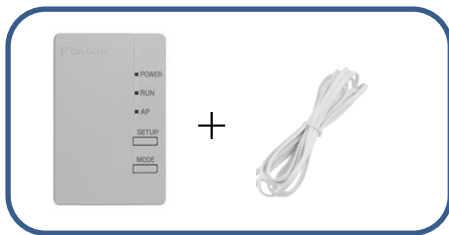


Notice: When you are in reach of your home network, it is recommended to log out of your out-of-home account to achieve a more immediate reaction.

2. Features

2.1. Product description

The BRP069A42 is delivered with the PCB and the wire connection of 1,6m length.



2.2. General features

	Feature	In-home operation	Out-of-home operation
Basic features	Start/stop operation	✓	✓
	Set operation mode: <ul style="list-style-type: none"> - Automatic - Cooling - Heating - Fan only - Dry 	✓	✓
	Set temperature set point	✓	✓
	Set weekly schedule timer	✓	✓
	Available actions: Start/stop operation, select operation mode, set temperature set point. Maximum 4 actions per day (28 actions total).		
	Set air flow rate	✓	✓
	Set air flow direction	✓	✓
	Readout current room temperature	✓	✓
	Readout current outdoor temperature	✓	✓
Readout current humidity	✗	✗	
Additional features	Readout smartphone application version	✓	✓
	Readout wireless adapter firmware version	✓	✓
	Readout error code (if any)	✓	✓
	Set custom adapter name	✓	✓
	Disable/enable adapter LED's	✓	✓
	Child lock function	✓	✗
General features	Connection test function	✓	✗
	Remote adapter software updates	✓	✗
	Automatic daylight saving time function	✓	✓
	Demo function (internet connection required)	✗	✓

2.3. Interface languages

The user interface of Daikin Online Controller application is available in the following languages:

Language	iOS	Android
English	✓	✓
German	✓	✓
French	✓	✓
Dutch	✓	✓
Spanish	✓	✓
Italian	✓	✓
Greek	✓	✓
Portuguese	✓	✓
Russian	✓	✓
Turkish	✓	✓
Danish	✓	✓
Swedish	✓	✓
Norwegian	✓	✓
Finnish (Suomi)	✓	✓
Czech	✓	✓
Croatian	✓	✓
Hungarian	✓	✓
Polish	✓	✓
Romanian	✓	✓
Slovenian*	✗	✓
Bulgarian*	✗	✓
Slovak	✓	✓

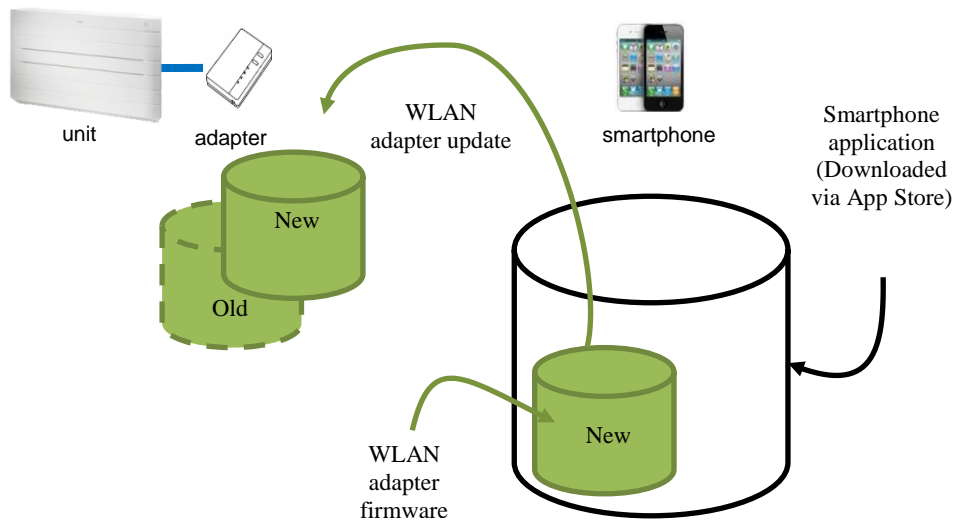
To select a language, set your smartphone's general language setting to the language of your preference.

*Not supported by iOS

2.4. Adapter firmware updates

The Daikin Online Controller smartphone installer package contains additionally the latest firmware for the WLAN adapter.

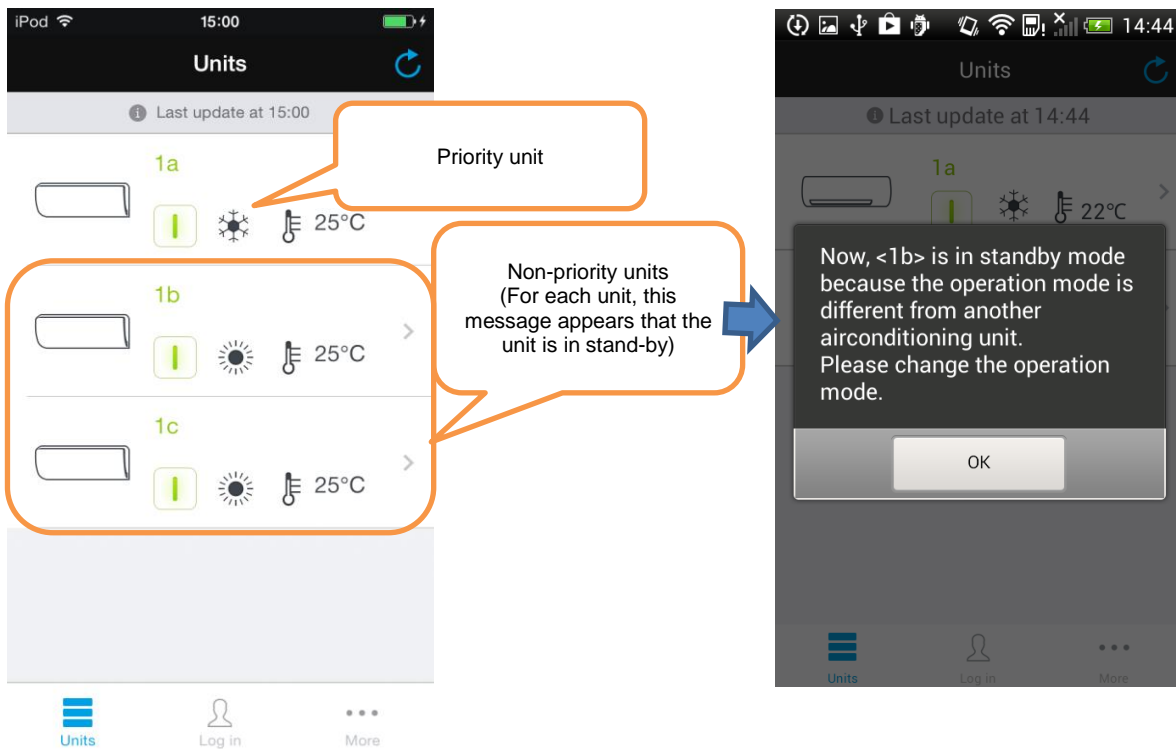
If the smartphone application detects an older version of the WLAN adapter firmware of a WLAN adapter in your network, when you are connected "in-home", the smartphone application will automatically prompt you to install the latest version of the WLAN adapter firmware.



2.5. Multi-indoor unit connectivity

The Daikin Online Controller can be installed on multi-split systems. When changing indoor operation modes, the priority will be given to the priority unit (ref. the indoor unit manual for more information). The non-priority units will be put in standby mode in case the operation mode is not matching the selected operation mode on the priority indoor unit.

On the Daikin Online Controller, this will be visible as on below screenshot:



3. Compatibility

3.1.Indoors

The Daikin Online Controller application is compatible with following units:

V1.3.0	Ururu Sarara		FTXZ-N
	A-Mid	SCW (15,20,25)	CTXS-K*; FTXS-K*
		MCW (35,42,50)	FTXS-K
		NW-M (60,71)	FTXS-G
		Siesta SCW (20,25)	ATXS-K*
		Siesta MCW (35,50)	ATXS-K
	GSI	GSI	FTX-JV*/GV
		Siesta	ATX-JV*
	Floor Standing	Nexura	FVXG-K
		Standard Floor	FVXS-F
	Flexi		FLXS-B(9)
	Optimized heating	Standard	FTXLS
		GSI	FTXL-JV*
		Siesta GSI	ATXL-JV*

* Wiring adapter KRP980A1 is required.

3.2. Smartphone/tablet requirements

Operating system	Android OS 2.3 or later iOS 5.1.1 or later
Free space	>50 MB required to install the application
Required smartphone features	Wifi-function supporting one of the following standards: IEEE 802.11b/g/n
Display orientation	The application has been developed for portrait oriented displays.

3.3.Router requirements

Wifi	Support for one of the following standards: IEEE 802.11b/g/n
Security	Support for WPA/WPA2 PSK (Personal) (WPA Enterprise and WEP are not supported by the WLAN adapter *)
Installation	WPS function is recommended
Settings	Privacy separator function should be disabled (this blocks the smartphone application broadcasting function, preventing the detection of WLAN adapters in your network).

